

CERTIFIED LAND CORNER RECORDATION

DESCRIPTION OF CORNER EVIDENCE FOUND, AND ORIGINAL RECORD (if known)

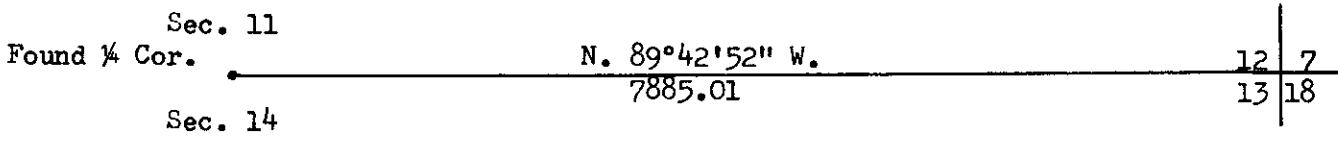
LOCATION ¼ S.11 S.14 T. 12 N., R. 63 W. 6th P. M.	Found concrete monument with brass-cap stamped as indicated on the left. Monument at fence corner with fences running East, West and South.
---	--

DESCRIPTION OF MONUMENT AND ACCESSORIES ESTABLISHED TO PERPETUATE THE ORIGINAL LOCATION OF THIS CORNER:

Set wood stake and lath by monument.

SKETCH, WITH COURSE AND DISTANCE TO ADJACENT CORNER IF DETERMINED IN THIS SURVEY.
(May Sketch or Paste Reproduction on Reverse Side.)

Note: Basis of bearing - solar observation.



I, Robert C. Corbet certify that I have carefully performed or reviewed the work done on the diagrammed corner as reported on this recordation form and approve the same.

Robert C. Corbet 495
 Signature of Surveyor Registration No.

STATE OF WYOMING,
 Office of Clerk and Recorder,
 County of Taramie

This "corner record" was filed for record on the 22 day of June, 1973, was noted on the cross-index plat and is assigned page No. _____, in book No. _____

John O. Williamson B
 County Official

Cross Index No. <u>J-19</u>	T. <u>12 N.</u>	R. <u>63 W. 6th</u>	Mer.
_____	T. _____	R. _____	Mer.
_____	T. _____	R. _____	Mer.
_____	T. _____	R. _____	Mer.
_____	T. _____	R. _____	Mer.
_____	T. _____	R. _____	Mer.
_____	T. _____	R. _____	Mer.

The State of Wyoming } ss
County of Laramie

This instrument was filed for record
at 3:42 o'clock P. M. on the
22 day of February
A. D. 19 23 and duly recorded in
Book of page

John B. Smith

County Clerk & Ex-Officio Register of Deeds
by Deputy